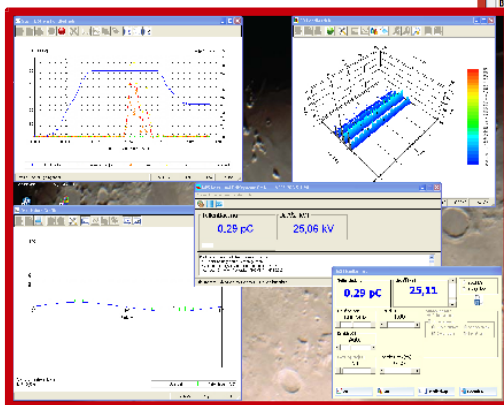
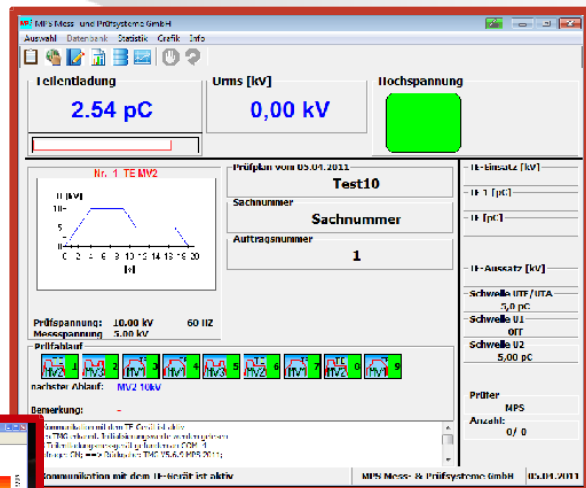


# MPS

Mess- & Prüfsysteme GmbH



Control and data processing software

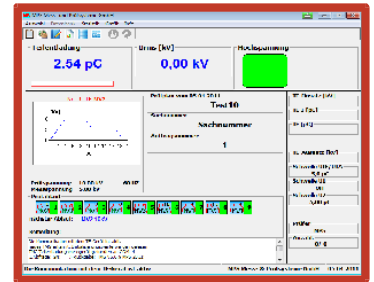
**MSPS**

# CONTROL AND DATA PROCESSING SOFTWARE **MSPS**



A complete remote control of the partial discharge test set TPP is possible with software MSPS. It is designed on a data base and offers following possibilities especially for series fabrication tests and in the quality control.

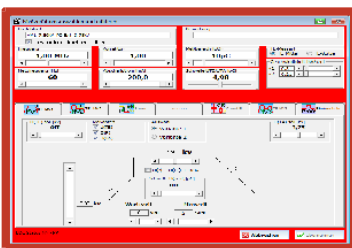
- automated control of the PD - test and recording of measured values with the indication pass - fail - break down
- simple operation, only pressing the start button
- easy edition of the test parameters for the test sequences
- several successive test sequences are possible in one test plan
- combination of dielectric and partial discharge test
- additional test sequences for DC -test, current and capacitance measurement(option)
- password entrance check of protected parts of MSPS
- test report with all measured values and setting parameters
- automatic control of high voltage and measuring selector switch (option)
- statistical evaluation with graphical display of test results as a gaussian curve
- Log - files for failure diagnostics
- multi user access of one data base in connection with several PD - test sets(option)
- administration of calibration and measuring instrument data and process data recording of the PD-test set(option)
- Connection to a SQL- Server (option)



## Display for generating test procedures

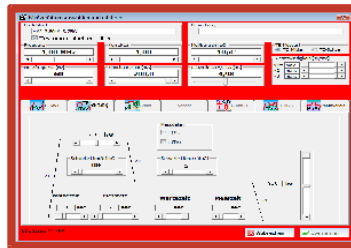
### Measuring sequence 1:

For isolation tests with PD- inception and PD- extinction recognition

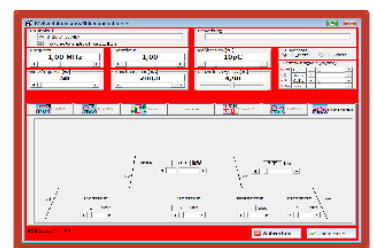


### Measuring sequence 2:

For isolation tests with adjustable voltage level for PD- tests



### Measuring procedure for PV modules (option)



## Partial discharge analysing software **MSPS-G:**

More measuring procedures are available.

Knowing the level and number of PD-pulses in relation to the phase position is important to find out the cause of failures, especially during development and testing of complex components.

The software MSPS-G allows to detect, display and analyse partial discharges, which will be displayed with number, level and phase position. Following graphical displays are available

- coloured PD-pattern as fingerprint
- three - dimensional coloured PD – pattern
- oscilloscope display

Besides simple operation you have the advantage of adjusting any angle of view of the three - dimensional chart. It is possible to load, save and export graphics. A module for presentation the voltage and PD-graph along the time is available too.

### Partial discharge and voltage curve

presents the voltage and PD graph along the time

**MPS Mess - & Prüfsysteme**  
Industriestraße 17  
D - 97483 Eltmann, Germany  
Fon: 0049 / 95 22 95 09 30  
Fax : 0049 / 95 22 95 09 31  
E-Mail: info@mps-systeme.de  
Internet: www.mps-systeme.de

Changing without notice

